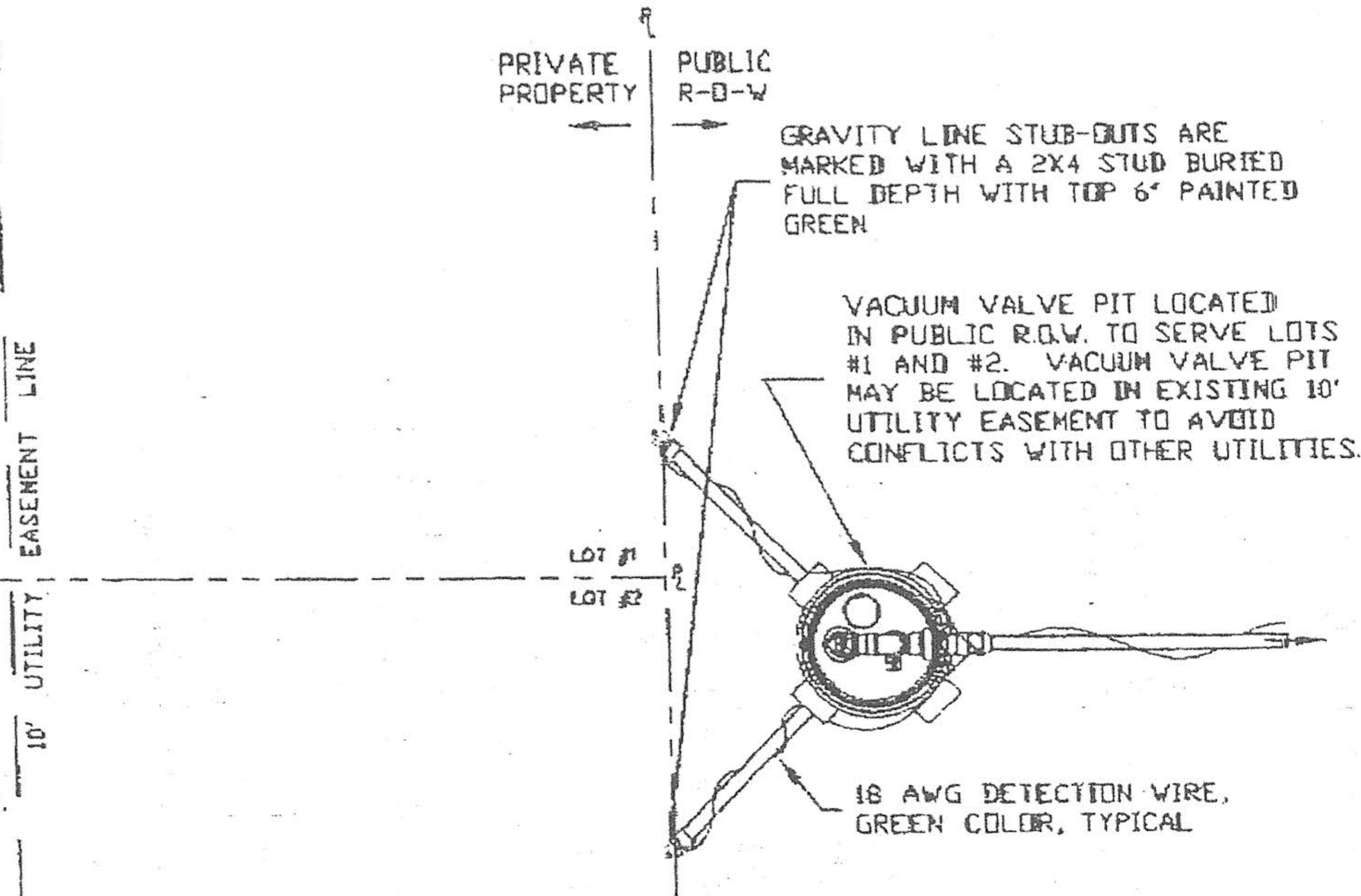
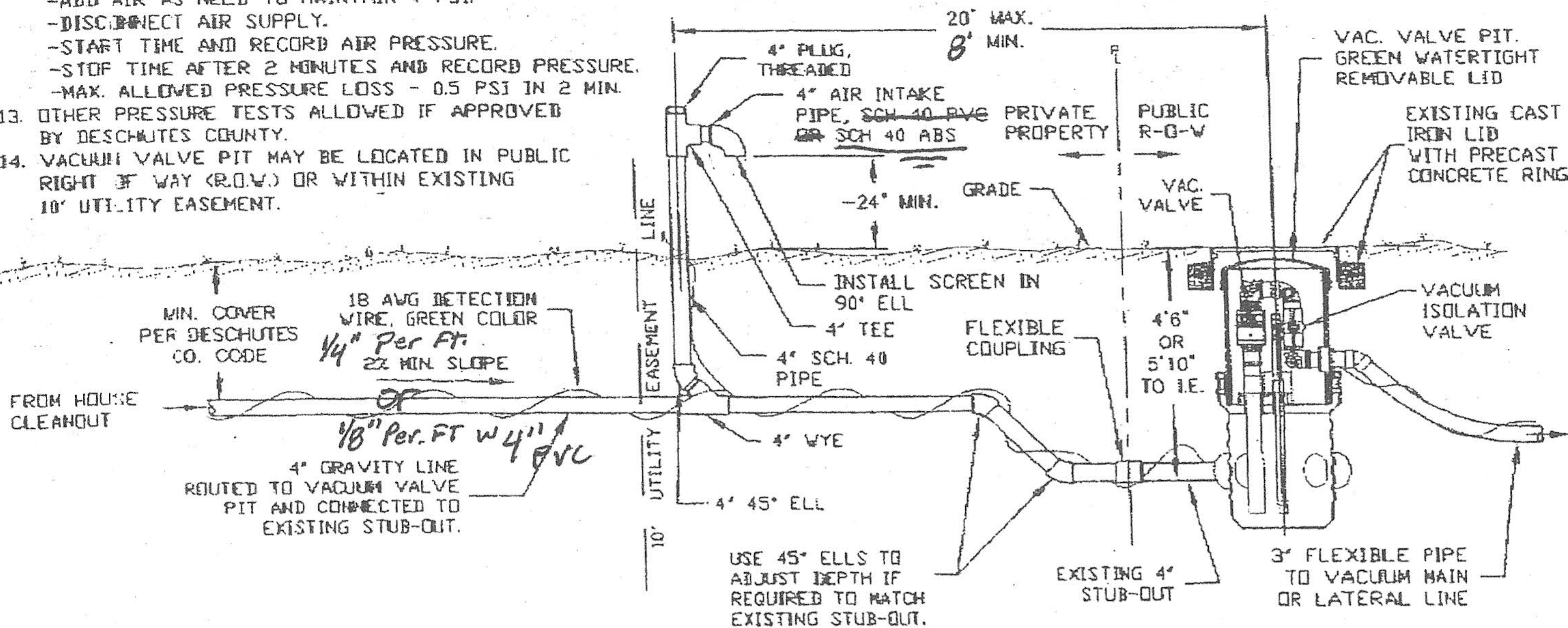


DWWII VACUUM SEWER SERVICE NOTES:

- HOME OWNER RESPONSIBLE FOR INSTALLATION OF 4" GRAVITY LINE FROM HOME TO VACUUM VALVE FIT, INCLUDING 4" AIR INTAKE PIPE AND CONNECTION TO STUB-OUT.
- 4" AIR INTAKE PIPE SHALL BE LOCATED WITHIN THE EXISTING 10' UTILITY EASEMENT LOCATED ALONG THE ROAD SIDE OF ALL LOTS.
- INSTALL 4" GRAVITY LINE PER DESCHUTES COUNTY PLUMBING CODE.
- DESCHUTES COUNTY PLUMBING PERMIT AND INSPECTION REQUIRED.
- DWWII SANITARY DISTRICT INSPECTION REQUIRED.
CONTACT: SVEN PETTERSON - 541-593-3124
- DO NOT BACKFILL TRENCH UNTIL ALL INSPECTIONS ARE COMPLETED
- MINIMUM SLOPE - 2% FALL (TOWARD PIT).
- VERIFY PROPER SLOPE BEFORE COMMENCING WORK.
- INSTALL WITH PROPER BEDDING TO PREVENT POCKETS OR BELLIES IN THE PIPE.
- THE 4" AIR INTAKE PIPE, AS SHOWN, SERVES AS A CLEANOUT.
- MATERIALS:
 - 4" GRAVITY LINE - PVC PER DESCHUTES CO. CODE.
 - AIR INTAKE PIPE - SCH. 40 PVC OR SCH. 40 ABS
- LOW PRESSURE AIR TEST - TIME PRESSURE DROP
 - COORDINATE AIR TEST WITH DWWII INSPECTION.
 - ADD AIR SLOWLY TO 4 PSI.
 - ALLOW 2 MIN. FOR AIR TEMP. TO STABILIZE.
 - ADD AIR AS NEED TO MAINTAIN 4 PSI.
 - DISCONNECT AIR SUPPLY.
 - START TIME AND RECORD AIR PRESSURE.
 - STOP TIME AFTER 2 MINUTES AND RECORD PRESSURE.
 - MAX. ALLOWED PRESSURE LOSS - 0.5 PSI IN 2 MIN.
- OTHER PRESSURE TESTS ALLOWED IF APPROVED BY DESCHUTES COUNTY.
- VACUUM VALVE PIT MAY BE LOCATED IN PUBLIC RIGHT OF WAY (R.O.W.) OR WITHIN EXISTING 10' UTILITY EASEMENT.



PLAN VIEW - VALVE PIT LOCATIONS



ELEV. VIEW - 4" GRAVITY LINE CONNECTION

TYE ENGINEERING, INC.

725 NW HILL, BEND, OREGON 97701 (541) 389-6959

DWG #: 476-VAC-DET. DRAWN BY: J.L.C. SCALE: N.T.S. DATE: 12-14-05